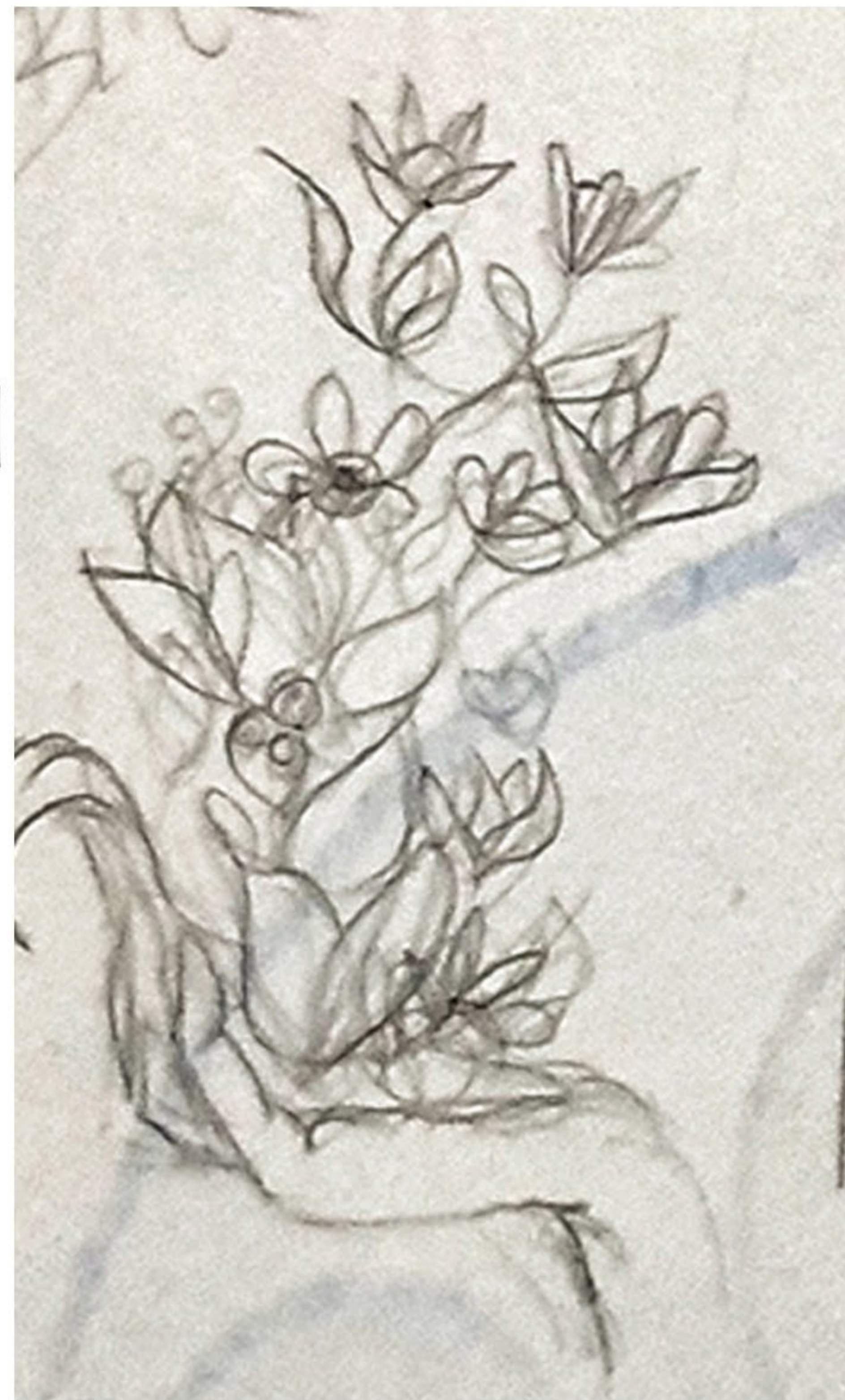


SKETCHING THE IDEA

Step One I don't exactly remember what my inspiration was but when I doodled the middle plant, I thought of placing it on a hand like growing out. And recently I am into eye balls, so this was a perfect combination. The doodle was of course nothing special but it's one of the shapes I constantly draw and sometimes I finally incorporate my curved lines into my works. I can name examples, the red hair shape of the very first clown I did ("Le Mime Tragique" or the hair of a recent Sketch "Enternal Swirl"). Anyways, for this idea it came really fast to my mind that I wanted to have a black background and paint it in gouache. Even the title was immediately present. And that's very rare for me.



MandyCrossbow



REFERENCES

Step Two: For this smaller, quite uncomplicated, piece I only used these two images as references.

For the hand I knew I wanted to have the outside hand, without the thumb in the front. So I mainly looked on Pinterest and searched the images I already saved in my Hands folder. I found a good images very soon.

For the flowers I typed on google "Magnolia" and browsed through the images. This one is the one I liked the best with its varies of open and closed petals. When I sketched my idea I was pretty fast sure, I want magnolia. Although sometimes I draw flower shapes and then I need to find a flower that looks close enough to my sketch.



THE SKETCH

Step Three I did the main sketch digitally. Something I rarely do but I recently got a tablet so this might happen more often now. I am definitely not good at drawing or painting digitally but I don't need to anyway, I simply use it for sketches or mockups. Later in the painting I changed the two closed flower a bit.



Mandy
2014

THE MATERIALS

Step Four now it's time to set up my workspace. I only have one meter of a desk and not too much space on it with the monitor standing there. Below I'll list all the materials I used as good as I remember <3



WORKSPACE

Monitor with all the references is prepared. Also my Earl Grey tea, water jar, and all the materials I want to use.

I always use this as MDF board as background for my paintings so the desk is protected. Love how colorful it looks already





Selfmade StayWet Palette for the Acrylic paints. I use kitchen roll as wet sheet and baking paper as paint mixing sheet.



Water jar with a spiral inside (selfmade) to clean brushes better. And a spray bottle with water to spray the paints wet every now and then.

Used to be a white T-shirt, now use it as cloth to wipe brushes





canvas 8x12in/20x30cm



additionally I applied about 3 more coats of Gesso to achieve a smoother surface

MandyCrossbow



various brushes by Daler Rowney "System 3 Series"



Schmincke Spray Varnish for the final painting as protection in satin matt



Matte Medium for the black background. So it's not too reflective when scanning.

THE PAINTS!!!

I mix alot with all these colors to create midtones and they turn out differently every single time/ every new painting

Mandy Crossbow



THE ACRYLICS

THE ACRYLIC GOUACHE



Lemon Yellow



Light Yellow



Titanium White



Opera Pink



Scarlet Red



Magenta



Rose



Violet



Ultramarine Blue



Turquoise Blue



Blue Green



Viridian

THE PAINTING PROCESS

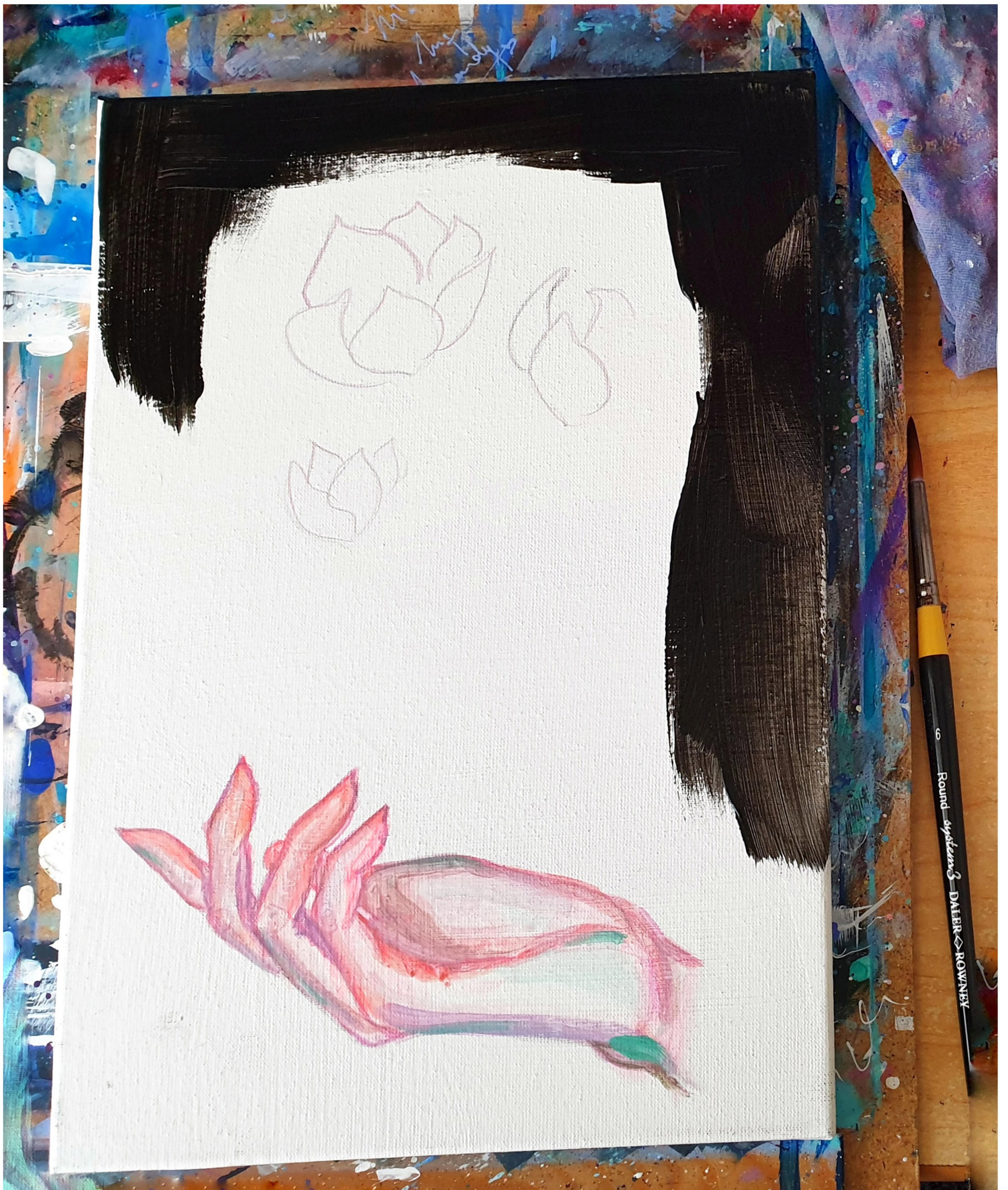
Step Five Before I started, I applied 2 or 3 more layers of Gesso on the canvas because its texture was too rough and 'dry' for me. And because it was not a complex sketch, I only transferred the sketch, that I printed out on copy paper, using a graphite paper. I placed it on the canvas, printed sketch on top and with a pen and a lot of pressure, I redraw the lines. The rest I would paint free handed. It wouldn't makes much sense when I want to paint the background complete black.



Then I prepared selfmade StayWet palette and placed the paints I want to use for the skin tones on it.



MY SKIN COLOR PALETTE

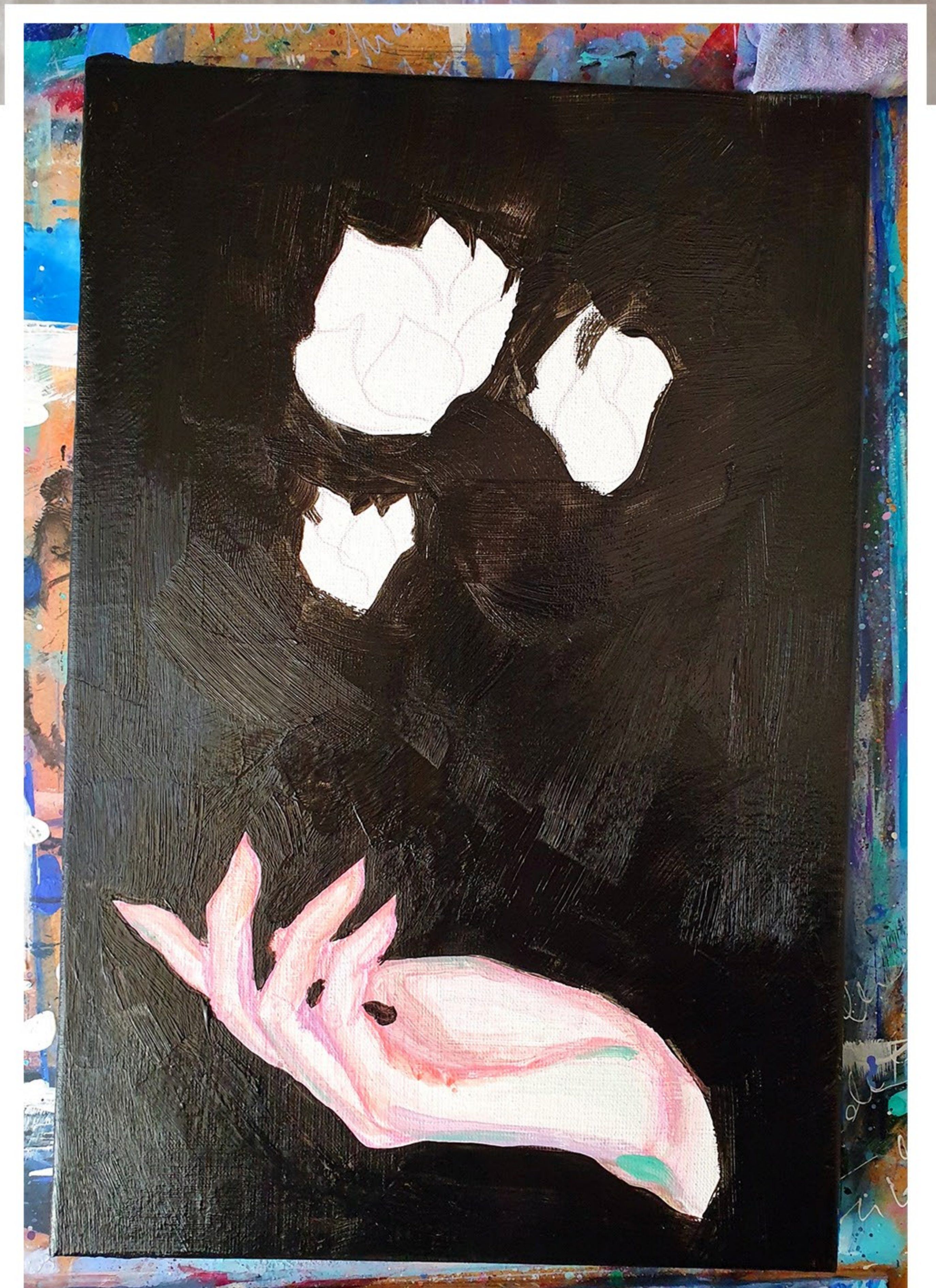


As usual, i dilute red/pink-ish paints with white and lots of water and do a base wash. For the shadows I use the darker shades as purple or mix purple and emerald green for a greyish shade. Randomly I place light greens and blues.

The backgrounds gets a black coat.

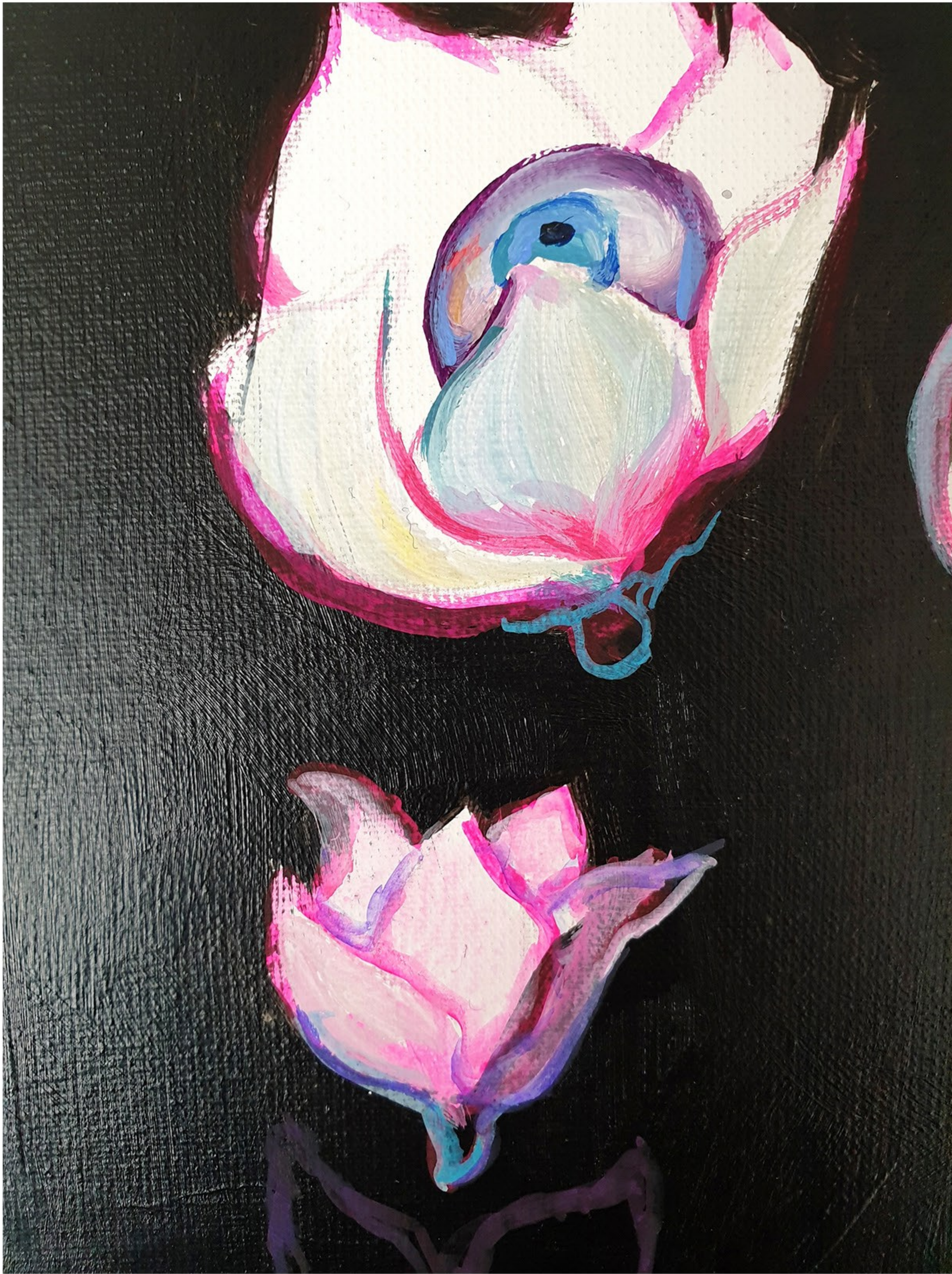


I applied 3 layers of black paint. From the second layer I started to add matte medium to reduce sheen when scanning. It was not complete matte but maybe satin.



So the background is done. now I can continue with the hand and building up layers. I simply repeat the previous steps. And the layering helps to smooth the skin. I always check the reference for dark and light parts

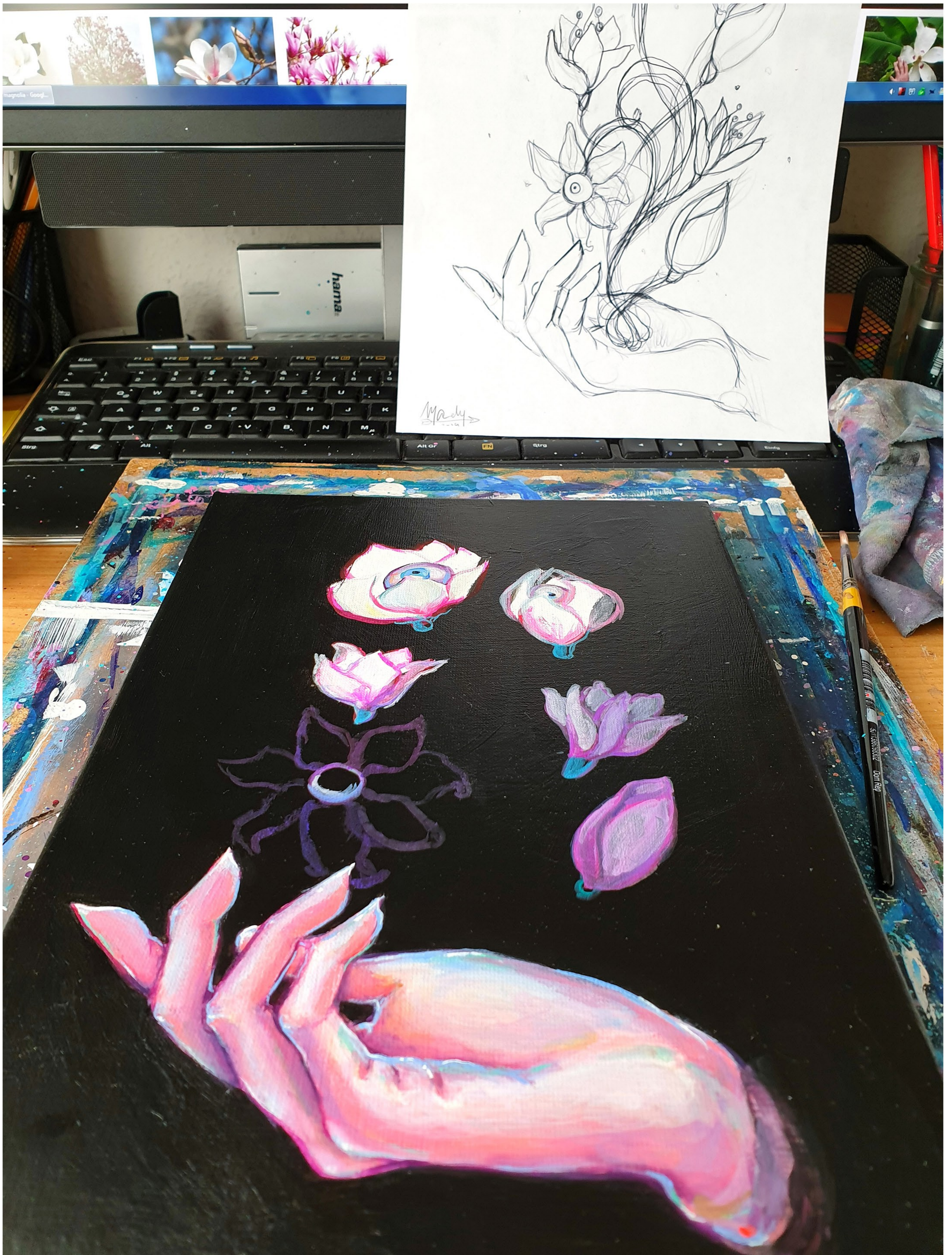




Then I started with a Gouache palette. I used my old Daler Rowney StayWet palette. I needed a second palette because my selfmade one was full with the skin tones and black paint.

I checked the flower reference roughly. It's the first time I actually used the new acrylic gouache paints. The colors are of course a bit different from my normal color palette and I was still not used to it. So all I did with the gouache is try guessing.





Something I almost never do BUT SHOULD. I hang up the sketch to always check it just as I do with the references. It helped to focus.



The gouache result that I would cover up the next day. Also I changed the closed flowers a bit than from a sketch.



A day later, I worked on the flowers again. They didn't look realistic enough for my taste. And something very important! I actually used the brush to create the pedals. I took a flat brush by size 1/4" and darker flower base color and painted with one brush stroke in the upwards direction. Then with a light shade the same process but downwards to create the natural pedal texture. Added some shadows and highlights were needed and done!



The eyes are all done with the same paints I used for the skin and flowers. Random blue and pink paints where I think it looks good. Creating depth and worked out radiants.

Only two more flowers need to be done.

Random colored dots in the background because it looks pretty

THE FINAL PAINTING

I worked much longer than I planned or expected on the painting. I think it's caused by the mistake of painting the petals not the right way. I've always struggled with flowers but from time to time I learn more and so I love them even more.

Thank you so much for your support!
More Pics can be found under the tag "early preview" on Patreon <3

