

PROCESS PDF

"VOYANTE"

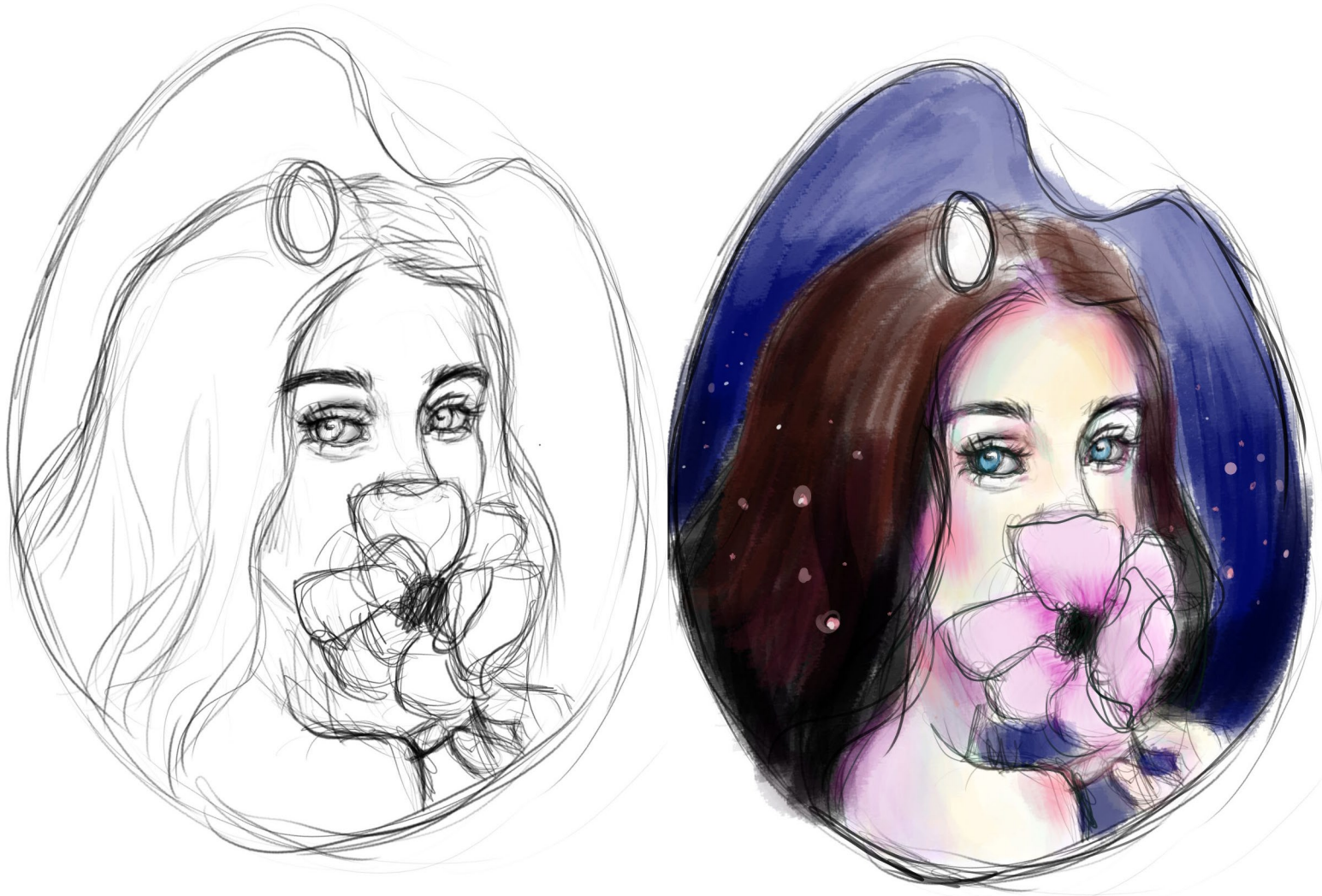
step-by-step tutorial instructions
15 Pages



SKETCHING THE IDEA

Step One Usually I first sketch my idea and then search for references. But in this case I browse through my instagram saved posts and found a beautiful photograph.

I took my tablet, opened the free drawing program "Krita" and roughly sketched the shape of the palette first. Then I sketched using the reference as guideline. Then I had a vision of what the color scheme should look like and placed the colors very unprofessional. I'm definitely no digital artist and have zero experience, the colored version is simply to see my idea and to use it later as guideline.



REFERENCE

Step Two: Other than in more complex paintings, I only used this photo from instagram (@svetlana_belyaeva_offical) References are mainly used as guideline for correct anatomy, shapes or shadows. Sometimes when the picture has a bad resolution and I have issues with an eye for example, I search for similar pictures to get a better eye view.

In the sketch, I didn't plan the eye in the flower yet, it was something that I decided later



THE MATERIALS

Step Four now it's time to set up my workspace. I only have one meter of a desk and not too much space on it with the monitor standing there. Below I'll list all the materials I used as good as I remember <3



WORKSPACE

Monitor with all the references is prepared. Also my Earl Grey tea, water jar, and all the materials I want to use.

Tabletop Easel by
MABEF (M/15)



I always use this as MDF board as background for my paintings so the desk is protected. Love how colorful it looks already



Selfmade StayWet Palette for the Acrylic paints. I use kitchen roll as wet sheet and baking paper as paint mixing sheet.



Water jar with a spiral inside (selfmade) to clean brushes better. And a spray bottle with water to spray the paints wet every now and then.

Used to be a white T-shirt, now use it as cloth to wipe brushes





wooden mixing palette
9x12in/24x30cm by Marabu



I applied 2 coats of white gesso

Schmincke Spray Varnish
for the final painting as
protection in satin matt



various brushes by Daler Rowney "System 3 Series"

THE PAINTS!!!

I mix alot with all these colors to create midtones and they turn out differently every single time/every new painting

MandyCrossbow



SKIN COLOR PALETTE

(for the background I used ultramarine, violet, paynes grey and mauve for the flower)

THE PAINTING PROCESS

Step Five Before I started, I applied 2 layers of Gesso to seal the wood and have a nice white surface to start with.

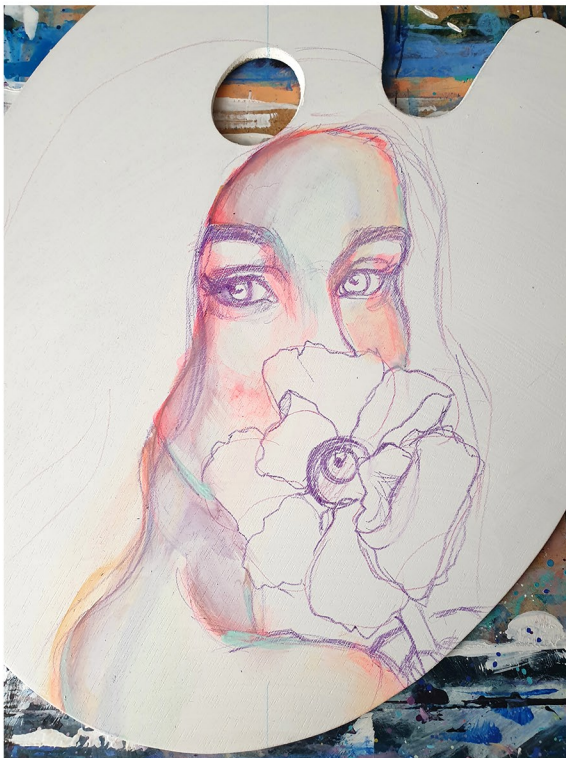
Then I hang the palette on a nail and drew a light line to get the middle of the painting and now the focus of the hanging picture since it's not straight.

Then I transferred part of the face with the projector to get the measurements right. The rest I sketched with a erasable colored pencil by Eberhard Faber and it's honestly very bad quality, I wish I could find Prisma Color Erase here in Germany to try out!



Then I prepared selfmade StayWet palette and placed the paints I want to use for the skin tones on it.



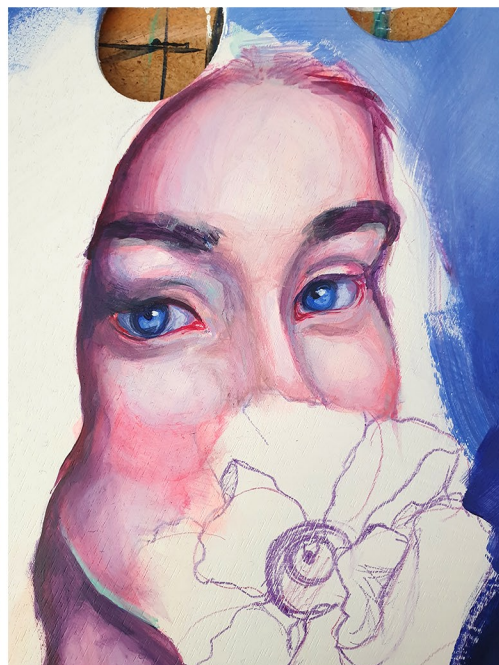


As usual, I dilute red/pink-ish paints with white and lots of water and do a base wash. For the shadows I use the darker shades as purple or mix purple and emerald green for a greyish shade. Randomly I place light greens and blues.

the backgrounds gets a light wash of blue with a bit of paynes grey to desaturate the blue



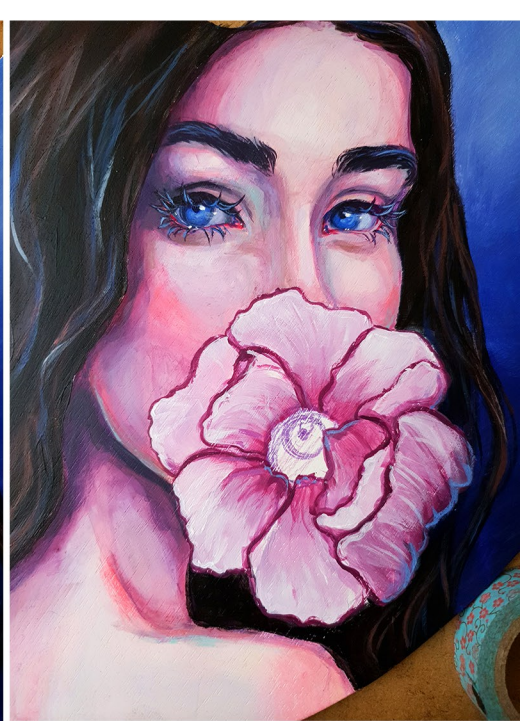
I mixed violet and paynes grey for the dark shadows. The background gets more layers or ultramarine, paynes grey and violet(+white). The eyes get the same blue. Love to use the same colors repetitively.



MandyCrossbow

I simply repeat the layers of light pinks and blue and shadows. The eyebrows are a dark mix of violet, green and Paynes Grey again.

For the hair I started using black for the darkest part and Vandyke brown and reds for the main color. Adding a bit white to make the lighter parts and light blue for some highlights

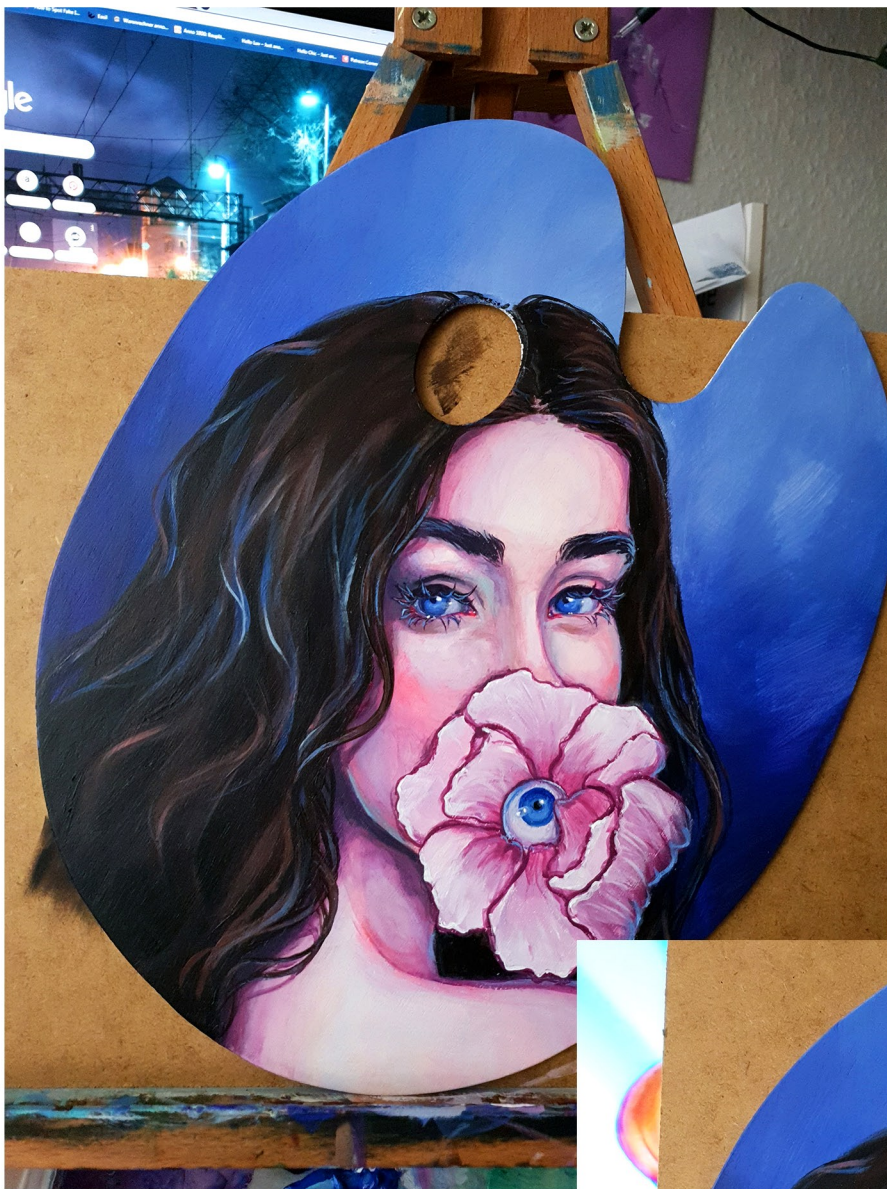


MandyCrossbow



I painted the eyelashes with a liner brush and used grey and later black. For the highlights I used some of the blue mixture again. The eyes got a few white highlights too

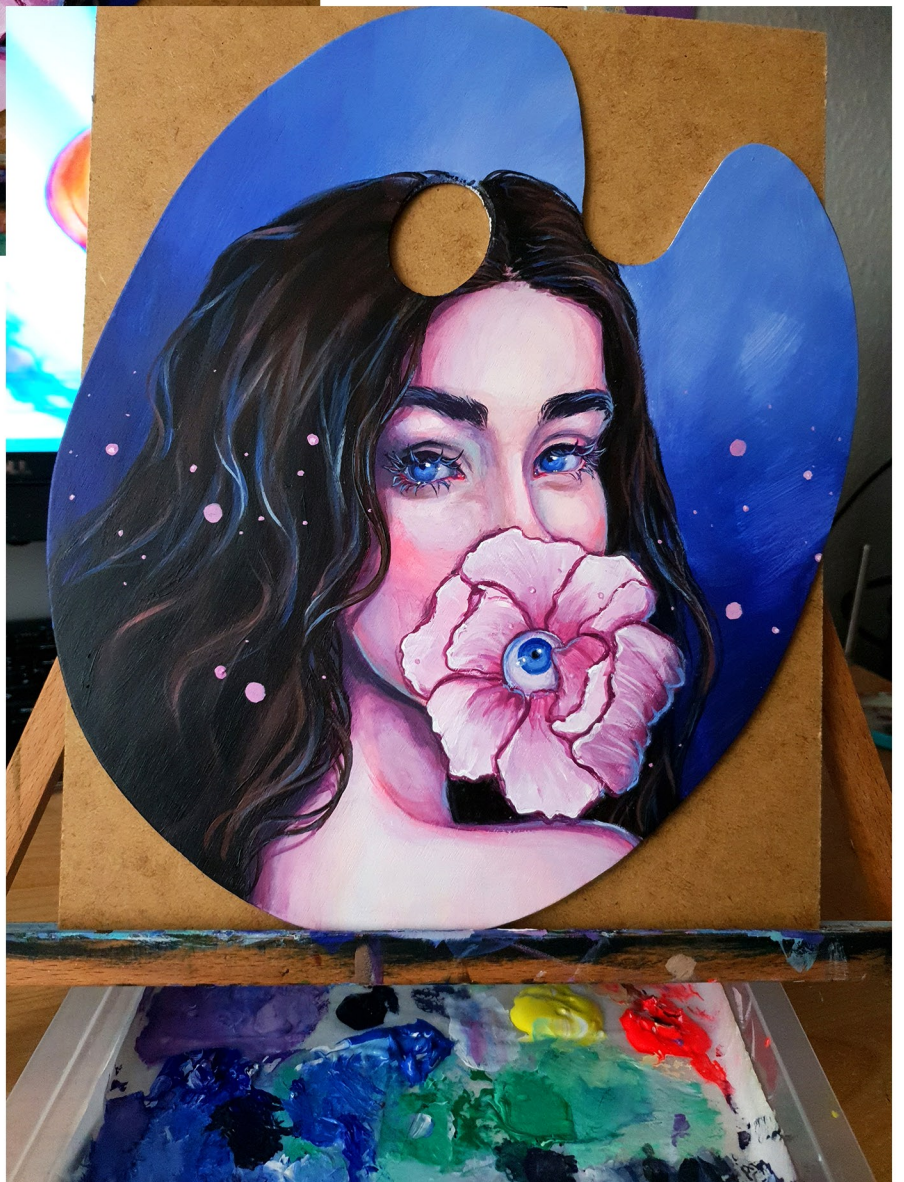
For the Flower I used a bit of pink for the darks but mainly mauve and worked with a flat brush to get the natural petal shape right.



For the Flower eye
I used light grey, the
blue mixture again and
a bit of mauve. White
Highlights are added

MandyCrossbow

Then as last I added
some circles in mauve



THE FINAL PAINTING

I worked two full days on the painting with 3 weeks break inbetween.

Thank you so much for your support!
More Pics can be found under the tag "early preview" on Patreon <3

